

A REQUEST FOR PROPOSAL FOR PROFESSIONAL SERVICES CONTRACT

Department of Highways
Professional Services Procurement Bulletin 2025-09
McCracken | 1-142 | US-62

This document constitutes a Request for Proposals for a Professional Service Contract from qualified individuals and organizations to furnish those services as described herein for the Commonwealth of Kentucky, Department of Highways.

I. PROJECT DESCRIPTION

County - McCracken
Route - US-62
Item No. - 1-142.00
Project Description - Address issues with service, congestion and safety from US-45 to I-24 in Paducah

II. PROJECT INFORMATION

Project Manager - Patsy Rawlins, P.E.
User Division - Highway Design
Approximate Fee - \$750,000 Preliminary Engineering & Environmental Services (Lump Sum)
Project Funding - STP (Federal Funds)
Project Length - Approximately 1.3 miles

III. PURPOSE AND NEED

The purpose of this project is to improve safety, congestion, and mobility for all users of the facility, including vehicular traffic along US-62 (Alben Barkley Drive) from the intersection of US-45 (Lone Oak Road) through the Interstate 24 Interchange at Exit 7 to Alben Barkley Extension. This project is also to create pedestrian connections from WKCTC to Hanna Plaza and the existing pedestrian facilities at these destinations.

This segment of US-62 serves as a vital connection for locals to their residences, two major hospitals, the interstate, city schools, college campuses, and businesses. Because this stretch of road lies in the residential neighborhoods, there are several access points which creates a need for evaluating crash data through this location due to the higher AADT of approximately 10,900 in 2023. Currently, this stretch of road is a missing link to the pedestrian network that exists in this area of the city. Pedestrian facilities are located at both termini of the project but do not extend through our project area.

IV. DBE GOAL

The Consultant team shall include a DBE Participation Plan with their Response to Announcement to help the Department meet the 11.95% DBE goal established by FHWA. The plan should demonstrate how DBE companies will be mentored or used to assist in the area(s) pertaining to this contract. An additional page will be allowed in the Project Approach (Section 7) to exhibit this plan. A maximum of four (4) points will be considered in the Evaluation Factors for the DBE Participation Plan.

V. SCOPE OF WORK

This two lane rural roadway should be examined for possible widening throughout and be evaluated as both a rural and urban typical section. Because this section is a missing link in the pedestrian network and the city encourages biking and pedestrian mobility, we want to complete the pedestrian network in this section. The selected Consultant will be required to provide Preliminary Roadway design, including the preparation of engineering studies, traffic studies, identification of appropriate typical sections, identifying any utility impacts, performing drainage design, developing dependable cost estimates, and conducting and preparing documents for public meetings.

This project may be advanced to Final Design upon the completion of Preliminary Engineering with a Contract Modification. The selected Consultant will then be required to provide engineering services to perform Final Roadway and Structural Design, including the preparation of any design studies, drainage design, right-of-way plans, construction plans, traffic control plans, and cost estimates as well as any other services that KYTC chooses not to perform with in-house forces.

VI. SPECIAL INSTRUCTIONS

The Department may retain any of the advertised services to be performed by in-house state forces.

Instructions for Response to Announcement can be found at:

<https://transportation.ky.gov/ProfessionalServices/Pages/Respond-to-an-Announcement.aspx>

VII. AVAILABLE STUDIES

[Transportation Study 2002 – Paducah-McCracken | 1-142 | US-62](#)

[SUA Study – Paducah-McCracken | 1-142 | US-62](#)

VIII. METHOD OF DESIGN

The selected Consultant shall utilize the most recent CADD Standards for Highway Plans Policy in the development of the highway plans. Refer to the 2019 CADD Standards for ORD V4 Project Development Memo for information pertaining to the latest CADD Standards and plan submittal.

IX. ENVIRONMENTAL SERVICES

Any necessary Environmental Services are expected to be provided by the Consultant. Based on preliminary discussion with the project team and all currently available environmental information for the proposed project location, we anticipate the required environmental document to be no higher than a (Categorical Exclusion Level 1). The final environmental document may be elevated (or reduced) to a different level of environmental documentation if environmental investigation leads to an alternative conclusion or changes in ROW occur. Prequalification of various Environmental Services are required to be identified in the Consultant's Response to Announcement.

X. PHOTOGRAMMETRIC SERVICES

The Consultant will provide mapping and will furnish manuscripts in ORD format. Statewide Elevation data and Aerial photography can be found at the following link [KyFromAbove - Kentucky's Aerial Photography & Elevation Data Program](#). The selected Consultant shall supplement this information with conventional surveying as determined during project scoping.

XI. STRUCTURE DESIGN

Structure Design is not anticipated for Preliminary Design. When the project advances to Final Design and if the selected Consultant is retained for Final Design services, the selected Consultant shall do the necessary engineering services to submit to the KYTC an Advanced Situation Folder(s) for the appropriate structure(s). The selected Consultant may be responsible for any necessary Structure Design services. Structure Design of the proposed structure(s) may be added as a Contract Modification. Prequalification in the area of Structure Design is required to be identified in the Consultant's Response to Announcement.

XII. GEOTECHNICAL SERVICES

The Department is expected to provide all Geotechnical Services but the selected Consultant may be asked to provide Geotechnical Services required for the projects. At any time, if the Department has the capacity to provide these services, the Department may retain the advertised geotechnical services. Prequalification in the area of Geotechnical Services is not required to be identified in the Consultant's Response to Announcement; however, the selected Consultant must obtain the required qualifications before providing these services, or bring a prequalified subconsultant at that time.

XIII. TRAFFIC ENGINEERING

In addition to the Departments existing traffic counts, the Consultant will collect traffic data and develop traffic projects and related information.

The selected Consultant will provide the analysis of the existing and proposed operations. Traffic Signal Design and Lighting Design services, if necessary for the completion of Final Design, may be added by Contract Modification at the appropriate time. At any time, if the Department has the capacity to provide these services, the Department may retain the advertised traffic services.

XIV. UTILITIES

The selected Consultant shall provide a project location map to the Department. The Department will send project location maps to all potential utility contacts to determine whether they may have existing utilities within these project limits. The Department will develop the utility contact list. Facility location maps received for this project will be provided to the selected Consultant.

All utilities including underground and overhead facilities within the project scope shall be field-verified by the Consultant. Sizes and types of underground and aerial utilities shall be identified on the plans for each alignment alternative in the PL&G submittal. In addition to survey horizontal location of visible utility features, the Consultant shall provide elevation of accessible manhole tie inverts and overhead low wire elevation.

The selected Consultant may be required to provide utility related services for this project, which may include utility coordination, construction inspection, or specific facility type utility design. These services have specific prequalification standards, required of the selected consultant or subconsultant.

The selected Consultant may provide SUE (Subsurface Utility Engineering) work as needed to field-locate utilities. Horizontal and vertical location of existing utilities shown in the roadway plans shall be adjusted by the Consultant as necessary to reflect actual SUE results. This service has a specific prequalification standard, required of the selected consultant or subconsultant.

The Department will submit a design information request ticket from KY811 during final design. The design information request will provide the selected consultant access to utility company supplied facility location data, sourced from KY811 member utility companies. There is no law requiring those utility companies to respond to a design information request with field location of the utilities within the project scope. If field locations are provided, the consultant shall perform field surveys to collect the utility company supplied field data. Horizontal location of existing utilities shall be depicted on final plans, in compliance with Department depiction standards with level of accuracy denoted, and adjusted as necessary to reflect actual field location. It is unlawful to request a normal excavation request ticket if no excavation is transpiring. If additional utility investigation is necessary, the consultant is advised to seek Department consult. Subsurface Utility Engineering (SUE) services may be available via project contract or statewide contract.

The selected Consultant shall acquire adequate information regarding existing utility features to identify existing utility facilities within the project area, document and confirm those that may be negatively impacted by the project. The selected Consultant shall bring attention any potential conflicts with existing utility facilities that may result in significant cost or time to relocate. The selected Consultant complete or contribute to a utility conflict matrix, documenting the existing utility facilities that may be impacted by the project. The Consultant shall document or confirm the following for each utility in the conflict matrix: type of utility, owner of utility, quantify the extent they may be impacted, potential impacts to project budget, potential impact to project schedule, confidence of utility location depicted, and recommendations for remedy.

XV. PREQUALIFICATION REQUIREMENTS

To respond to this project the Consultant must be prequalified in the following areas by the response due date of this advertisement:

ENVIRONMENTAL ARCHAEOLOGY & OTHER SERVICES

- Air Quality Analysis
- Prehistoric Archaeology
- Socio-Economic Analysis
- Highway Noise Analysis
- Historic Archaeology
- Environmental Document Writing & Coordination
- Cultural-Historic Analysis
- ~~Stream & Wetland Mitigation~~

ROADWAY DESIGN

- Rural Roadway Design
- Surveying
- Urban Roadway Design
- *Advanced Traffic Engineering Design & Modeling** (see note below)
- *Advanced Drainage Analysis & Design** (see note below)
- *Photogrammetry & Related Services** (see note below)

TRAFFIC ENGINEERING

- Traffic Engineering
- *Electrical Engineering Roadway Lighting** (see note below)
- *Electrical Engineering Traffic Signals** (see note below)

TRANSPORTATION PLANNING

- Traffic Forecasting
- Traffic Data Collection
- *Advanced Transportation Planning Engineering** (see note below)
- *Pedestrian & Bicycle Planning & Design** (see note below)
- *Transportation Planning Engineering** (see note below)
- *Travel Demand & Simulation Modeling** (see note below)

Geotechnical Services* (see note below)

- *Geotechnical Engineering**
- *Geotechnical Drilling**
- *Geotechnical Laboratory Testing**

Structure Design* (see note below)

- *Standard Structures**
- *Spans Under 500 Feet**

Utility Design* (see note below)

- *Subsurface Utility Engineering**
- *Electrical Level 1**
- *Utility Preconstruction Coordination **
- *Gas Level 1**
- *Communication**
- *Water & Sewer Level 1**

* Note – These prequalifications are not required with the initial proposal as it is uncertain to the extent practicable if they are necessary. Should these services become necessary during the delivery of the project in this or future phases, the selected Consultant team must obtain the

required qualifications before providing those services or bring on a prequalified subconsultant at that time.

XVI. PROCUREMENT SCHEDULE

Dates other than Response Date are tentative and provided for information only.

- Advertisement Date: March 11, 2025
- Response Date: April 2, 2025 by 4:30 PM ET (Frankfort Time)
- First Selection Meeting: April 7, 2025
- Final Selection: April 23, 2025
- Pre-Design Conference: April 30, 2025
- Consultant Fee Proposal: May 9, 2025
- Contract Negotiations: May 21, 2025
- Notice to Proceed: June 11, 2025

XVII. PROJECT SCHEDULE

- Alternate Alignment Review December 2025
- Public Meeting/Local Officials Meeting February 2026
- Preliminary Line & Grade April 2026
- Design Executive Summary Submittal May 2026

XVIII. EVALUATION FACTORS

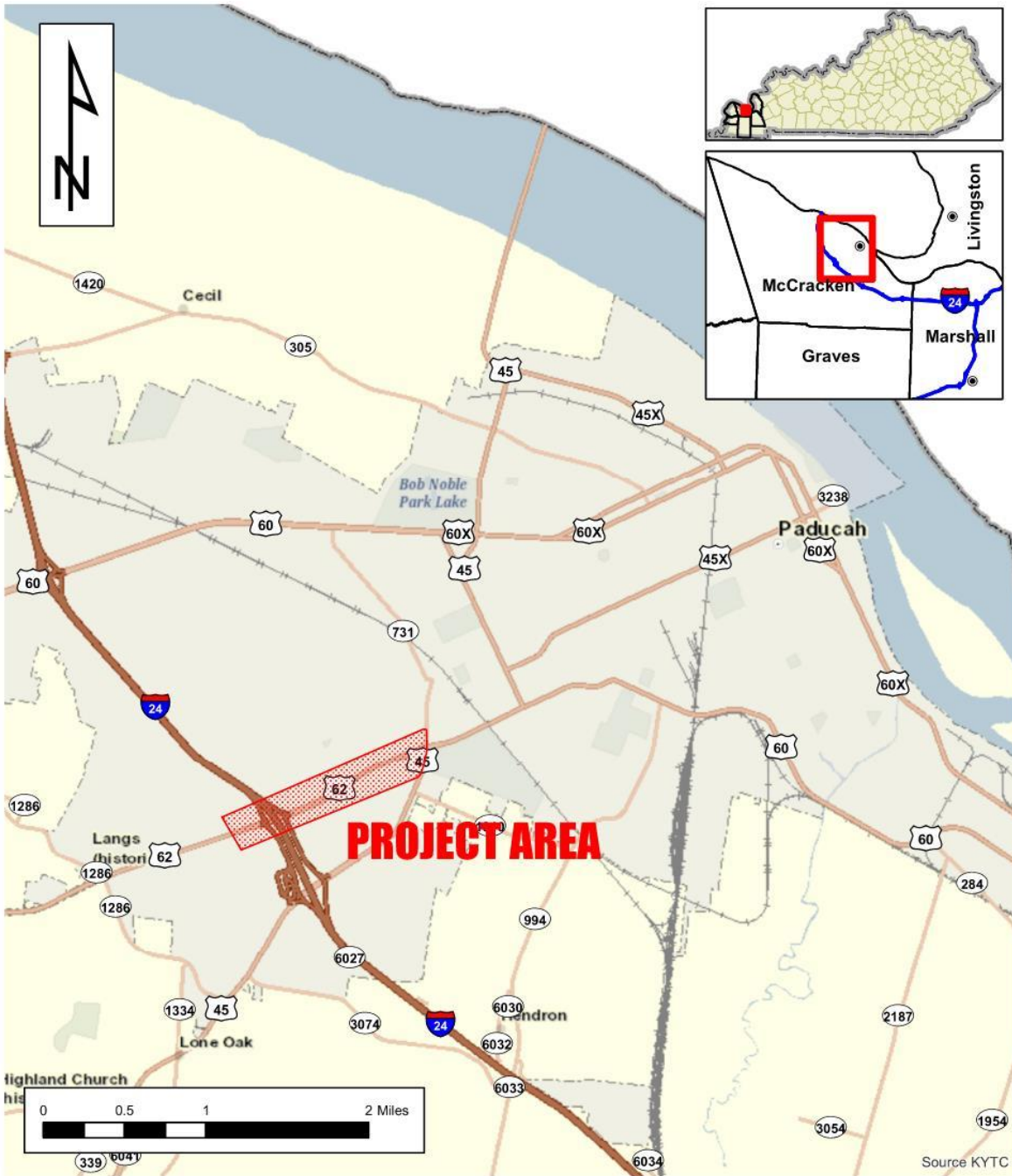
Consultants will be evaluated by the selection committee based on the following weighted factors:

1. Project approach and proposed procedures to accomplish the services for the project. (20 Points)
2. Relative experience of consultant personnel assigned to project team with highway project for KYTC and/or federal, local or other state governmental agencies. (15 Points)
3. Past record of performance on projects similar in type and complexity. (15 Points)
4. Capacity to comply with project schedule. (10 Points)
5. The Consultant demonstrates a comprehensive understanding of safety strategies and the ability to generate meaningful ideas that can measurably enhance the safety of the completed project. This includes both the immediate effectiveness and the long-term safety impacts of the finished facility. (5 Points)
6. DBE Participation Plan. (4 Points)
7. Knowledge of the locality and familiarity of the general geographic area. (2 Points)

XIX. SELECTION COMMITTEE MEMBERS

1. Patsy Rawlins, P.E., User Division
2. Karl Sawyer, P.E., User Division
3. Crystal Mapel, P.E., Secretary's Pool
4. Emily Deason, P.E., Secretary's Pool
5. Marcelyn Mathews, P.E., Governor's Pool

XX. AREA MAP



**McCracken County
Item No. 1-142.00
US 62**

Disclaimer: KYTC provides this map as a reference only. Users are to validate information independently. Copyright: 2025 Kentucky Transportation Cabinet. All rights reserved.

Date: 2/17/2025